

2925 N Market St
ST. LOUIS, MO 63106

DEAD STORAGE WAREHOUSE 1,000-11,662 SF



PRICE: \$2.50 MG

PROPERTY HIGHLIGHTS

- Dead Storage Warehouse Space
- Free Move-in and Move-Out
- Dock Access
- 9-foot Ceiling Height
- Sprinklered Building
- Dry Storage-Newer Roof
- Great for Secure Storage
- 1,000-11,662 SF Available
- Lease Rate \$2.50 MG

LOCATION DESCRIPTION

Located a few blocks west of Jefferson and the new NGA's (National Geospatial-Intelligence) 1.7-billion-dollar campus north of downtown St. Louis bringing over 3,000 jobs and many other new projects. Making this an ideal location for any warehousing need.

SPACE DESCRIPTION

1,000-11,662 SF of dead storage space available in this 2-story industrial/warehouse building. Free move-in and out with a 1-year minimum lease. The Warehouse is fully sprinklered and has dock access. The ceiling height is 9 feet with 19-foot column spacing—a newer roof on the building.



For more information, please contact:



HAL HANSTEIN

Mobile: (314) 607-2928

Office: (636) 225-0385

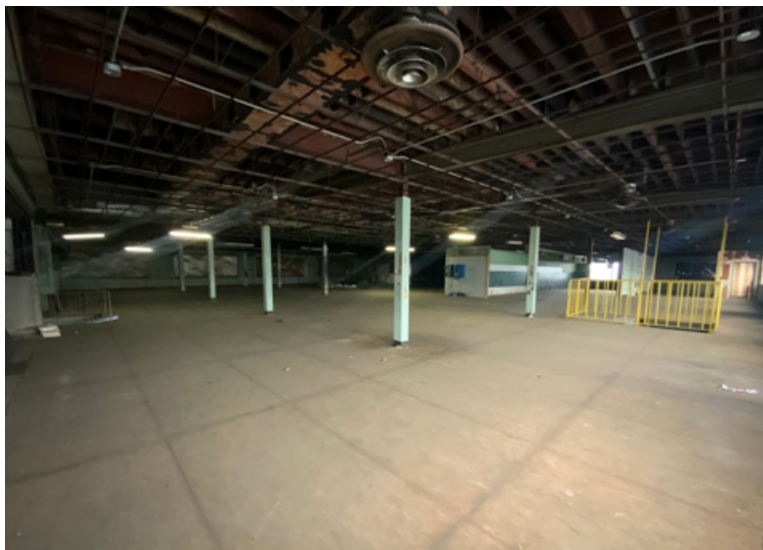
E-mail: Hal@cardinalrealtygroup.com

Website: www.cardinalrealtygroup.com



2925 N Market St
ST. LOUIS, MO 63106

DEAD STORAGE WAREHOUSE 1,000-11,662 SF



For more information, please contact:



HAL HANSTEIN

Mobile: (314) 607-2928

Office: (636) 225-0385

E-mail: Hal@cardinalrealtygroup.com

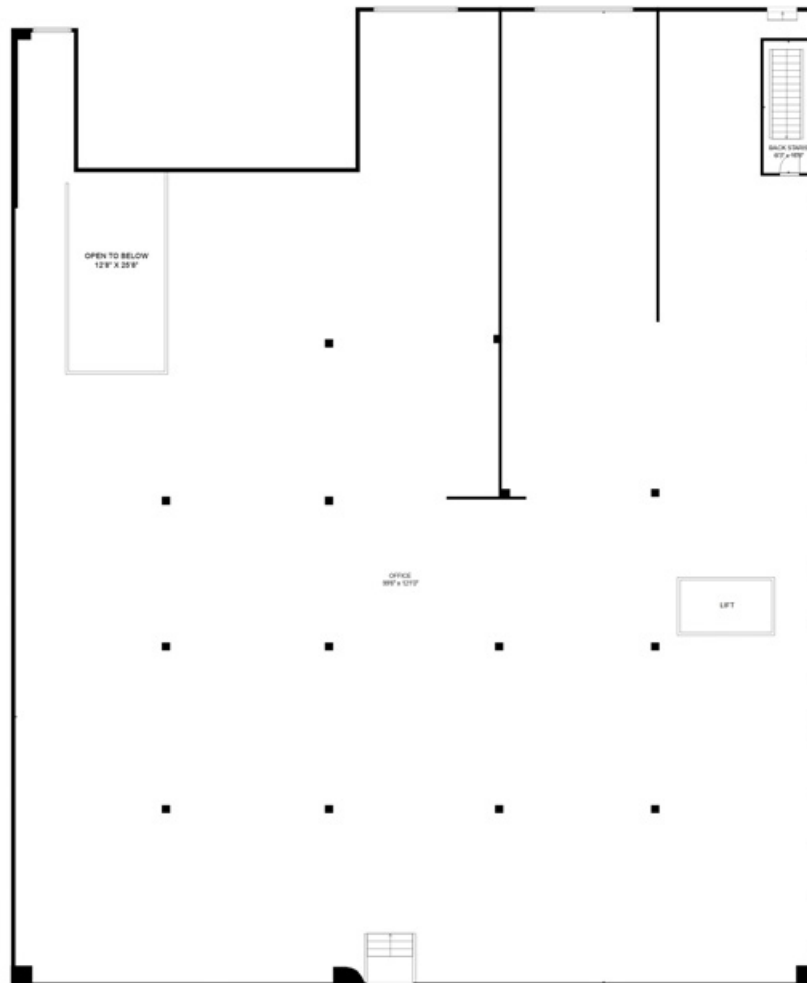
Website: www.cardinalrealtygroup.com



2925 N Market St
ST. LOUIS, MO 63106

DEAD STORAGE WAREHOUSE 1,000-11,662 SF

FLOOR PLAN



GROSS INTERNAL AREA
TOTAL: 11198 sq. ft
SIZES AND DIMENSIONS ARE APPROXIMATE, ACTUAL MAY VARY.



CARDINAL REALTY GROUP
REAL ESTATE & ACQUISITIONS
WITHOUT LIMITATIONS

For more information, please contact:



HAL HANSTEIN

Mobile: (314) 607-2928

Office: (636) 225-0385

E-mail: Hal@cardinalrealtygroup.com

Website: www.cardinalrealtygroup.com

